

# **ST. PHILIP & ST. JAMES PARISH CHURCH WHITTINGTON PARISH NEWS**



July &  
August  
2022



**JULY & AUGUST 2022**

**[WWW.WHITTINGTONCHURCH.CO.UK](http://WWW.WHITTINGTONCHURCH.CO.UK)**

50p

# **St Philip and St James' Parish Church, Whittington**



A Ninth Century Chapel rebuilt in 1844

**In the Worcester South East Team**

## **St Philip & St James Whittington and St Mark in the Cherry Orchard**

**Vicar**

The Rev'd Andy Stand 01905 358150

### **Church Officers for Whittington**

Churchwardens: Miss Janet Pearson 01905 357485  
Miss Jayne Rayer 01905 351344  
Asst. Warden: Mrs Brenda Giles 01905 25709  
Organist:  
Hon Secretary: Mrs Liz Chestney 01905 359708  
Hon Treasurer: Mrs Brenda Giles 01905 25709  
Magazine Editor: David Chestney 01905 359708  
david.battenhall@outlook.com

### **St. Martin with St. Peter**

**Team Rector:** Rev'd Peter Hart 01905 355119  
**Curate** Rev'd Dr Robin Parry 01905 764651

### **Holy Trinity & St Matthew Ronkswood**

**Vicar**

Rev'd Rob Farmer

**Readers in the Team:**

Mr Mike Bunclark

**Team Administrator:**

Rebecca Caskie: Team Office, St Martins Church,  
London Road, Worcester WR5 2ED  
Tel: 01905 358083  
email: worcestersoutheastteam@gmail.com

*For enquiries about Baptisms, Thanksgivings, Marriages and Blessings,  
please contact the Team Administrator as above.*

***The Team Office at St Martin's is open again on Mon, Tues, Thurs &  
Friday, but visits should continue to be by appointment.  
Rebecca can always be reached by phone and email.***

## ***In This Issue***

Front Cover	1
Team Details	2
Index	3
Letter from the Vicarage for July	4/5
Coronavirus Covid-19 & On-line Video Services	6
Ride and Stride 2022	7
What's on at Whittington for July & August	8
What's on, Memorial Service & Plant Sale	9
Whittington New Building Opening	10/11
Choral Evensong at St Martin's	12
HAF Summer Holiday Camp at St Martin's	13
Adverts	14/23
From the Archdeacon of Dudley, Nicki Groarke	24/25
Whittington Parish Council	26
Whittington Community Hall	27
The beginning of Islam	28
Mendel, the Pea and the beginning of Genetics	29
News & Views from St. Mark's Church	30/31/32/33
Reaching the deepest place on Earth	34
Sunday Worship Arrangements, Whittington	35
Back Cover - Light and shade in Kew Gardens	36

### **The kiss.....**

An honest seven-year-old calmly announced to her parents that Billy Brown had kissed her after church. "How did that happen?" gasped her mother.

"Well, it wasn't easy," admitted the young lady, "but three girls helped me catch him."



# *Letter from the Vicarage*

## *July & August 2022*



Hi Everyone,

How are you doing?

I heard the Archbishop of York, Stephen Cottrell, reflecting on Radio 2's *Pause for Thought* recently, encouraging listeners to slow down our pace of life. He had been walking the St. Cuthbert's Way, from Melrose to Holy Island, and he had seen much of nature that he wouldn't have been able to see had he been travelling by car.

One of the most popular and best known passages in the bible is the 23<sup>rd</sup> psalm:

The Lord is my shepherd, I shall not want. He makes me lie down in green pastures; he leads me beside still waters; he restores my soul.

Whenever I read it, it reminds me of occasions that I have spent walking in the countryside, (occasionally doing a long-distance walk myself) through fields and meadows besides streams, and often leaves me yearning to be in those places again just spending time walking and relaxing, away from the hustle and bustle of modern day life.

Maybe July or August will afford you the opportunity, to do just that to get away from it all, either for the odd day or two, maybe a weekend or for a longer holiday and period of rest. I do hope so.

In St. John's gospel, chapter 6, Jesus makes the claim, 'I AM the bread of life'. In so doing Jesus claims to be the fundamental staple needed to sustain and feed us, to strengthen us for the demands of everyday life. Those needs of course aren't just spiritual ones, but are physical as well.

In an age where we find ourselves constantly urged to increase our efforts and our efficiencies, it is all too tempting to try to prove our own self-worth by working ever harder, faster and longer. If though we give in to those temptations we will surely end up burning ourselves out. The physical demands will become too much for our bodies to cope with.

Jesus' practice was to regularly withdraw himself, taking himself away from the crowds that flocked to hear him, so that he and his disciples could make time to relax and replenish their energy levels; tending both to physical and spiritual needs.

Jesus invited his disciples to, 'Come away and rest with me a while'. I appreciate that for many of us, particularly those with small families or loved ones who need constant care and attention, the invitation is easier to make than to accept. But none the less, God makes the invitation and I strongly encourage you to find some means of saying 'yes'.

However you find yourself spending your time during July and August, I pray that it may be a time of sustenance and recreation.

Every blessing,

Andy

## Evening Sun

After a day of cloud and rain  
The evening sun comes out again.  
Forget the gloomy day that's gone,  
And listen to the robin's song!

In the sunshine's golden glow  
See the garden's floral show!  
And nature, freshened, can rejoice  
In sparkling colour, scent, and voice.

If your day is damp and grey  
Know the cloud will go away –  
The pouring rain will soon be done  
And then will come the evening sun!

## Coronavirus - Covid-19

**St Philip and St James Whittington**  
**Public worship and normal services continue.**

*For details see "What's on". Arrangements for attending are on page 35*

The Worcester South East Team of clergy continue to work on ways of serving the needs of all our parishes.

*Some services and other events are still being conducted on-line by the Team (see below)*

The Team Office at St Martin's is open to visitors, preferably still by appointment, and can be reached by phone and email, see inside cover.

## LIVE ON-LINE VIDEO SERVICES

**For all churches in the South East Team**

Churches in the Team are open for public worship but we are continuing to meet for worship during the week using the zoom app downloadable from the zoom.us website. To join one of the services please email the host who will send you a link:

**Morning Prayer:** Monday to Friday at 8.30 a.m. *hosted by Mike Bunclark (mbunclark@tiscali.co.uk)*

**Compline:** Monday to Friday at 8.30 p.m. *hosted by Mike Bunclark*

**Monday Prayer Meeting:** 4.00 p.m. *hosted by Joan Hazzard (joanhazz@gmail.com)*

**Virtual 'Yew Brew' Coffee Morning:** Saturday at 11.00 a.m. *hosted by Andy Stand*

**Prayers for Peace and Justice:** Saturday at 12 noon *hosted by Joan Hazzard*

**For enquiries about Whittington please email the Vicar**

**[andy.stand@sky.com](mailto:andy.stand@sky.com)**

**Sunday Services will be streamed from  
Whittington on Zoom.**



Ride + Stride is the single largest source of income for many Historic Churches Trusts, Worcestershire among them, enabling them to make Grants to places of Christian worship. Taking place on the 2<sup>nd</sup> Saturday

of September the funds raised can be split between the nominated Trust and the participants chosen church or chapel. This year our church with others, will be visited by Worcester West Team of Churches on a "Day Retreat" and for lunch and prayer with us.

As ever Ride+Stride is a wonderful way to enjoy getting out and about safely as well as raising much-needed funds to support Grant applications from churches and chapels across the country.



In 2022, Ride+Stride for Churches will take place on 10th September. Support Vicar Andy and Mike Phillips, by sponsorship, as they cycle round churches in this part of Worcestershire



*Not everyone has a natural gift for rural ministry*

## Baptism

A couple took their five year old young daughter to church. During the service, the minister conducted the baptism of a tiny infant. The little girl watched in wonder as he held the baby, said solemn words, then poured water over its head, and then carefully wiped it dry.

Finally, she turned to her father. "Daddy, why is he brainwashing that baby?"

## What's on at Whittington July, August & September

### **Saturday 2 July**

10.00am Forest Church at Worcester Woods Country Park

### **Sunday 3 July**

#### **Trinity 3**

11.00am Parish Communion

1.00pm Baptism

### **Sunday 10 July**

#### **Trinity 4**

11.00am Family Service

### **Sunday 17 July**

#### **Trinity 5**

11.00am Parish Communion

6.30pm Memorial Service

### **Tuesday 19 July**

6.30pm PCC Meeting – Elizabethan Room

### **Sunday 24 July**

#### **Trinity 6**

11.00am Family Communion

### **Sunday 31 July**

#### **Trinity 7**

11.00am Morning Prayer

### **Saturday 6 August**

10.00am No Forest Church this month

### **Sunday 7 August**

#### **Trinity 8**

11.00am Parish Communion

1.00pm Baptism

### **Sunday 14 August**

#### **Trinity 9**

11.00am Family Service

### **Sunday 21 August**

#### **Trinity 10**

11.00am Parish Communion

### **Sunday 28 August**

#### **Trinity 11**

11.00am Family Communion

### **Saturday 3 September**

10.00am Forest Church resumes

3.00pm Wedding of Sam & Sophie



## **What's on at Whittington July, August & September *cont.***

### **Sunday 4 September Trinity 12**

11.00am Parish Communion

1.00pm Baptism

### **Sunday 11 September Trinity 13**

11.00am Family Service

### **Tuesday 13 September**

6.30pm PCC – Elizabethan Room

**SUNDAY 17<sup>th</sup> JULY 2022**



**MEMORIAL SERVICE 6.30 p.m.**

**A THANKSGIVING TO COMMEMORATE ALL THOSE  
WHOM WE HAVE LOVED AND ARE AT PEACE IN THE  
CHURCHYARD OR ELSEWHERE**

## **PLANT SALE**

A huge thank you to all who supported my plant sale this year; we raised £810. In addition to this the Community Hall hosted a celebration for the Queen's Platinum Jubilee and very kindly invited me to have a plant stall, and, with the help of David & Liz Chestney we raised £201 so in all we raised £1,011 - an all time record!

I have said it before and will say it again, I enjoy growing the plants for sale but without the continuing support that I receive both locally and further afield it would be to no avail. Thank you again everyone and, health permitting, I hope to see you all again next Spring.

Brenda Giles

# WHITTINGTON NEW BUILDING

## OPENING OF THE ELIZABETHAN ROOM

On Sunday 12th of July, we welcomed nearly 60 members of our Team Churches and invited guests as we finally celebrated the opening of our long-awaited Elizabethan Room. The sun shone down, and the temperature was ideal. We began with a short service in the church led by the Venerable Robert Jones, Archdeacon of Worcester and our Vicar Andy Stand, during which we prayed for God's blessing on the Church, the Community and all



who will enjoy using the Meeting Room, and our lovely rural churchyard. We sang the two hymns – God is working his purpose out and Lord, for the years, accompanied by Mike Elden at the organ, and the service closed with prayers of thanksgiving for our Queen who had celebrated her Platinum Jubilee the previous weekend, and the singing of the National Anthem. We then processed outside to witness the Blessing of the Meeting Room and disabled Toilet which were sprinkled with Holy Water, and declared “Open”.

**The ceremonies now completed** it was time to enjoy the wonderful array of scones, cakes and meringues accompanied by tea and coffee which were served in the church. There was also a beautiful celebration cake which had been made especially for this occasion by Diane Harrison and was much admired before being cut by Robert Jones.



The Meeting Room was much admired, and we received many favourable comments. The new Dishwasher proved to be a real asset and was put to good use. It had been a very successful afternoon and had been much appreciated by all those who were able to attend. Unfortunately, because of delays during the course of the work, this is not the end of the road for the new building as there is still much to do both inside and outside before the Elizabethan Room can come into full use. We're now expecting this to be in September.

# A Gallery of Pictures of Construction



# St Martin's Church

Sunday 14 August



## *Come and Sing* **Choral Evensong**

**A chance to sing under the direction of  
eminent choral conductor Paul Trepte  
in a glorious festive Evensong**



**Rehearsal 3.45pm** *followed by tea and cake (provided)*

**Service at 6pm** *including music by Stanford, Noble and Elgar*

A traditional cathedral-style Choral Evensong with congregational hymns

***Everyone is welcome to join the congregation***

**More details** on <https://comeandsingevensong.eventbrite.co.uk>

*If you wish to join the Choir - and you can  
sight sing or learn music quickly - please  
register for this FREE event on Eventbrite  
and you will be sent further information*



# HAF Summer Holiday Camp at St Martin's

For four days in Easter week we were pleased to be able to host HAF (Holiday Activities and Food) for children of families on low incomes. This is a Government-funded scheme to help children who are eligible for Free School Meals or whose families are on other benefits. Activities in April were run by MW Fitness and Community Care, and lunches were prepared and cooked in the Vestry kitchen with help from members of our Community Care Committee.

## Summer Holiday Camp

We have now offered our facilities for three weeks in the summer holidays - Tuesday-Friday in the first three weeks of August - and funding has already been agreed. We're working with a different HAF provider - PAL Fitness Education - who are collaborating with us to provide a range of activities, and St Martin's people will look after the food. The Holiday Camp is for children aged 5-12, and this time we're offering a Breakfast Club as well as Lunch.

The days will run from 8.30am til 1pm, and activities include cooking (a group of children will help to prepare lunch for all the children), arts & crafts, fitness & sports, and music. Every Thursday they will leave after Breakfast Club on an outing to Top Barn Farm Park, taking a packed lunch with them. This will allow our weekday Eucharist and Poplns to continue without disruption.

## WOW

By hosting the HAF Holiday Camp, we are definitely 'Widening Our Welcome' to the community and making good use of our facilities when many other activities are on a summer break. The aims are to help children from disadvantaged families to learn life skills, to keep active and healthy, and to be creative, as well as to feed them with good, nutritious food. Offering the facilities of the Church also help to provide an income which is much needed to meet the costs of running St Martin's.

## Publicity

Posters and fliers are in church and have been sent to schools for them to pass on to relevant families. Do pass a flier to any families you know who might benefit from this free offer, or give them this link for more information <https://pal-fitness-education.org.uk/st-martins-church-worcester>.

**Helpers needed** The children will be in the care of St Martin's while they are in the Vestry for breakfast and lunch, and we're looking for volunteers who can help to supervise them. Please contact me if you can help in this way. You will need to have DBS accreditation, and that can be arranged if you don't already have it.



# WILLIAM JUPE **Photo** restoration

“ I was completely taken aback by the quality of repair demonstrated on your website. I had no idea such things were possible. ”

*Dr David Cooper*

WWW.RESTORINGGLORY.CO.UK | 01905 317713 | HAMILTON RD.

## Working from Home?

Come to Kingsway House to escape...

**MEETING  
ROOMS**

**SERVICED  
OFFICES**

**COWORKING  
SPACE**

**EVENT  
SPACE**

We are a friendly, professional business centre in the middle of Worcester offering a great place to work if you need to focus on growing your business.

Superfast internet, reception service, IT support, unlimited drinks and great coffee all included in our prices!

Book a free tour today

**01905 619877**

info@kingsway-house.co.uk  
www.kingsway-house.co.uk

40 Foregate Street, Worcester,  
WR1 1EE  
100m from Foregate Street station

## Worcester Chiropractic Clinic

102 Bromyard Road, St Johns, WR2 5DJ

Expert treatment for a range of conditions:

- Sciatica
- Headaches
- Sports Injury
- Trapped Nerves
- Back Pain
- Carpal Tunnel
- And more...
- Tendonitis
- Osteoarthritis
- Neck Pain

01905 428 956

www.worcester-chiro.co.uk



## Computer Problems?

- ✓ We come to you at Home or Work
- ✓ PC & Laptop Problems Solved
- ✓ Upgrades & Repairs
- ✓ Virus & Spyware Removal
- ✓ Custom Built Computers
- ✓ New & Refurbished PCs & Laptops
- ✓ Wireless & Wired Networks Set Up
- ✓ Internet & Email Problems Solved
- ✓ Computer Tuition
- ✓ Small or Home Office IT Support

No-Fix No-Fee | Fast, Local, Reliable | Weekdays | Weekends | Evenings | Est. 10 Years

Call Brett on: 01905 670 444 or 07807 777 084 [www.Worcester-Computers.com](http://www.Worcester-Computers.com)

# D•A•R

(MALVERN)

DOMESTIC APPLIANCE REPAIRS

103 Worcester Road  
Link Top, Malvern, Worcs  
WR14 1EP

**Tel: 01684 572151**

*We sell and repair  
all makes of*

**Washing machines**

**Dishwashers**

**Refrigeration**

**Built in ovens**

**Cookers**

**Microwaves**

**Tumble Dryers**

## Gleamin' Glazin' Window Cleaning

Windows, frames, sills and doors  
cleaned every time

3 day spots and smears guarantee  
4 or 8 weekly cleans

Gutter emptying, Fascia and soffit  
washes, Conservatory cleaning

Text reminder the evening before  
Choice of payment methods  
Fully insured

A friendly, reliable, quality service

**Tel: Andy 07512 139308**

Email: [gleaminglazin@gmail.com](mailto:gleaminglazin@gmail.com)

Website: [gleaminglazin.com](http://gleaminglazin.com)

## Worcestershire Foot Health Care

Treatment in the comfort  
of your own home

*Professional treatment of*  
Corns • Callus  
Cracked Nails  
Ingrowing Toe Nails  
Athletes Foot • Verrucas  
Diabetic Foot Care  
Reflexology

**Jayne Auger**

Registered Foot Health  
Practitioner  
SAC. Dip. RFHP IHHP

**07531 294564**

[jayneauger66@icloud.com](mailto:jayneauger66@icloud.com)

## Bespoke Carpentry

Handmade fitted cupboards,  
wardrobes & shelving  
Oak doors & personalised fireplace features  
Handmade furniture

Outdoor/indoor bar areas  
High quality paint and finishing touches

Call or text **07964 704027**



## JDS Electrical

For all your electrical needs  
Fully qualified and insured

**JON HALL**

**07528 183057**

[jds.electrical@outlook.com](mailto:jds.electrical@outlook.com)



## JIM'LL FIX IT

**Handyman Service**

Painting & Decorating, Tiling, Laminate Flooring  
Door Hanging, Furniture Assembly, Shed Felling  
Gutter Soffits & Fascias - Clean/Replace/Repair  
Garden Clearance, Hedge & Tree Cutting, Mowing  
Fencing, Fence Painting, Pressure Washing

*I promise a fast, friendly,  
reliable service, 7 days a week  
Fully Insured - References available*

**01905 424945 / 07912 879214**



## Andy Lee Electrician

Registered  
NAPIT  
Part  
P

Testing  
Inspection  
Fault Finding

Servicing  
Installations  
Replacements

Telephone for Quotes:  
**01905 356945 or 07879 427571**

## Dynamic Carpet Cleaning

carpet and upholstery specialist



- ♦ local business
- ♦ competitive prices
- ♦ great results

**James Pullen**  
**07713 444044**

[dynamic-cleaning@hotmail.com](mailto:dynamic-cleaning@hotmail.com)

## LOCKSMITH & DOUBLE GLAZING REPAIRS

- 🔑 Replacement Glass Units
- 🔑 Hinges
- 🔑 Lock Cylinders
- 🔑 Multi-Point Locks
- 🔑 Handles
- 🔑 Garage Door Repairs

No Call Out Fees    Free Quotes    Over 20 years' experience - no job too big or small



AS Locks & Services.

[www.aslocksandservices.co.uk](http://www.aslocksandservices.co.uk)

**07956 371673**

**01905 726671**



## Are Your Locks Behaving Badly?

**Have Your Door & Window Locks Become Hard to Open or Close?**

**Book a "Check a Lock, Fix a Lock" Service Call**

All Locks Opened, Serviced, Supplied & Fitted, Doors Adjusted & Realigned

Double Glazed UPVC Door & Window Multi-Point Lock Repair Specialist

With No Call Out Charge & Free Onsite Estimates - Call Stewart

## THE LOCKSMITH

**01905 570 999**    [www.locksmithworcestershire.co.uk](http://www.locksmithworcestershire.co.uk)    **07871 44 20 11**

**Your Local Reliable Independent Locksmith**



## Angie's Garden Care



Friendly &  
Reliable Service

07432 386 418

01905 356 809

## Curtains by Kirsty

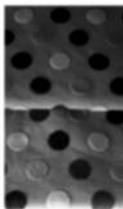
Made to measure curtains,  
Roman blinds & soft furnishings

- Handmade finish
- Friendly, professional service
- Attention to detail
- No obligation quote

Contact me today

07872 441702

kirsty.kessell@hotmail.co.uk



## GLM Property Maintenance

- Traditional Window Cleaning
- All aspects of Repointing
- Fascias & Gutters (Repairs & Renewal)
- Driveways & Patios (Installation & Cleaning)
- Roof & Solar Panel Cleaning
- Power Chimney Sweeping
- Cowl & Pot Fitting and Repointing
- Roofing
- Fencing & Landscape Gardening
- Hedge & Tree Cutting
- House & Garden Clearances
- Rubbish Removals
- Painting & Decorating

Fully insured and licensed waste carrier

No job is too big or too small!

Call for a free quote today!

**07399 024702**

**01905 864172**

GLMServices18@gmail.com



We're on Yell.com



Like us on Facebook!

@GLMServices18

## D & T Michael • Decorators

Professional Property Maintenance

Decorating

General repairs • UPVC Cladding

Kitchen & Bathroom refits

Tiling & flooring

Husband & Wife Team, established 20 years

Free Quotations • References available

01562 743193 07714 548984

Duncan Wood Cleaning Services

## DUNC'N'DUSTERS

Domestic Cleaning and Gardening

Friendly reliable service

No job too small!

Competitive prices

Tel: 01905 353906

Mob: 07379 990832



## Three Counties Chimney Sweep



Call Ian on:

Tel: 01684 891005

Mob: 07403 277436

- All Chimneys & Flues Swept
- Stove and Liner Installations
- Cowl & Pot Fitting Service
- Nest & Blockage Removal
- Tar Removal
- Fully insured



Your Local  
Accredited  
Chimney Sweep

worcestershire  
county council

**TRADING  
STANDARDS**

**APPROVED**

working in partnership with  
**Checkatrade**

# Bedwardine Funeral Services



A Caring and Sensitive Service • Available 24 Hours a Day  
Private Chapel of Rest • Pre-paid Funeral Plans Available

The Coach House, 30 Bromyard Road, St John's, Worcester WR2 5BT

## 01905 748811

[www.bedwardinefuneralservices.co.uk](http://www.bedwardinefuneralservices.co.uk)

## E. J. GUMERY & SON Funeral Directors

- ◆ Independent, Family Funeral Directors
- ◆ Established **1870**
- ◆ Private Chapels
- ◆ Floral Tributes
- ◆ Pre-Payment Plans
- ◆ Helpful & Efficient Personal Service



**Tel: 01905 22094**  
**24 HOURS**

68, 70 & 72 Ombersley Road  
Worcester WR3 7EU

[www.ejgumery.co.uk](http://www.ejgumery.co.uk)  
Email: [info@ejgumery.co.uk](mailto:info@ejgumery.co.uk)

## **Worcester Funeral Service** **01905 23499**

Independent Family Funeral Directors

Craig is available 24 hours a day  
Please call for any assistance



**Unit 6, Kilbury Drive  
Worcester, WR5 2NE**

**Golden Charter**  
Funeral Plans 

**[WorcesterFuneralService.co.uk](http://WorcesterFuneralService.co.uk)**

HELPING YOU EVERY STEP OF THE WAY

## Your Local Funeral Professionals

- Local experts creating Traditional, Colourful and Natural funerals to meet all personal requirements
- Available 24 hours a day providing the highest levels of service with compassion and respect
- Our caring, respectful and professional services start from just £1,995.

### A V BAND

41 St Nicholas Street, Worcester WR1 1UW  
Tel: 01905 22892

1 Malvern Road, Worcester WR2 4LE  
Tel: 01905 472272

### HOLLANDS

71 Barnards Green Road, Malvern WR14 3LS  
Tel: 01684 575343

For further information please visit:  
[www.dignityfunerals.co.uk/local](http://www.dignityfunerals.co.uk/local)



Part of Dignity plc. A British company



**TOWN & COUNTRY**

STONEMASONS  
MEMORIALS IN GRANITE,  
MARBLE, STONE AND SLATE

**ANDREW DEVEREUX**

Unit 86J  
Blackpole Trading Estate West  
Hindlip Lane, Worcester WR3 8TJ  
Tel: **01905 759191** or  
**07774 198968 (24hrs)**

  
**severnvale**  
WINDOWS | DOORS | CONSERVATORIES

**LOCAL FAMILY BUSINESS**  
with over 25 years experience

- Quality Upvc Windows & Doors
- Bespoke Upvc Conservatories
- Full planning & free CAD design services
- Misted & failed glass units replaced
- Stunning Composite Doors
- Energy A rated Windows



+ Installers of Firestone EPDM  
Rubber Roofing - join free roofing solution  
for flat roofs with a 50+ year life expectancy

Contact us for a free no obligation quote

**01905 630677**  
**[www.severn-vale.co.uk](http://www.severn-vale.co.uk)**

# Providing High Quality HomeCare

Eclipse HomeCare

making a difference

## Excellent Care from Local People

- We have a full range of hourly, daily & live in services
- Specialists in Dementia, MS & Alzheimer's care
- Longstanding teams of dedicated local caregivers
- Excellent reputation with Private Clients, Worcester County Council and CQC (Care Quality Commission)

Eclipse Homecare has been operating in this area for almost 10 years and is an Award winning local business. Speak to us today to find out more about how we can help.

[www.eclipsehomecare.co.uk](http://www.eclipsehomecare.co.uk)

Worcester	Malvern	Kidderminster	Bromsgrove	Teme Valley
01905	01684	01562	01527	01584
641 070	869 432	535 420	573 949	812 594



### JOBS

"Caregiving the most rewarding job"  
Call Shelley for a chat  
07890 250 839



**2015, 2016 & 2017  
Top Agency in  
Worcestershire**  
Voted by [homecare.co.uk](http://homecare.co.uk)

**CIVICare**  
a helping hand



Care in the home  
you can count on us...

- We supply Domestic Help, Personal Care & Nursing Care
- From a Minimum of ½ Hour Assistance
- Round the Clock 24 x 7 Service
- All Staff DBS & Reference Checked
- Assistance Packages Tailored to Suit Individual Needs

For more than a decade Civicare have been providing exceptional nursing & caring services throughout the country & have built a reputation for absolute quality, reliability & commitment.

**Care Quality Commission  
3 Star "Excellent Service" Rating**

For a free no obligation assessment call us on:

**01905 770110**

Email [info.central@civicaire.co.uk](mailto:info.central@civicaire.co.uk)  
[www.civicaire.co.uk](http://www.civicaire.co.uk)

**Radfield Home Care**  
Exceptional Care by Exceptional People

Worcester, Droitwich & Malvern



We are very happy to come out to meet you and your relatives to discuss our services. Please call us at any time for more information about how we can help you.

**01905 427 863**

[www.radfieldhomecare.co.uk](http://www.radfieldhomecare.co.uk)  
[worcesterc@radfieldhomecare.co.uk](mailto:worcester@radfieldhomecare.co.uk)

We are extremely proud to support older people in our community to live independently in their own homes.

Our team is passionate about delivering the highest standard of care and will always go above and beyond to help our clients.

- Outings & activities
- Household tasks
- Medication support
- Wellbeing
- Dementia care
- Personal care





## Looking for support at home?

With over 30 years' experience in caring for people within their own home, and a commitment to using only directly employed carers, we have the expertise to provide the best care possible from 30 minutes to full-time live-in care.

Looking for care? Call 01905 676981  
[www.helpinghands.co.uk](http://www.helpinghands.co.uk)



**Whiston Court**  
Worcester



## High-quality apartments for older people.

### Available to buy or rent.

Join our close-knit and welcoming community to make loneliness a thing of the past.

Our modern and spacious one-and two-bedroom apartment living packages include the reassurance of 24/7 on-site support, a daily cooked meal, weekly domiciliary help and even all of your own personal utilities, all for one affordable monthly fee.

Brought to you by Abbeyfield Worcester and Hereford Ltd, a charity committed to making time for older people.

Call 01905 317850 or visit  
[abbeyfieldwandh.co.uk](http://abbeyfieldwandh.co.uk)  
to find out more.



Part of the Abbeyfield family.



**Shelton & Lines**  
ESTATE AGENTS

37 DROITWICH ROAD  
WORCESTER  
WR3 7LG

"We're a family run estate agency focused on serving our local community and are proud to be a part of yours!"



Offering FREE! no obligation property valuations

Please call or  
book online

01905 616 330

[www.sheltonandlines.co.uk](http://www.sheltonandlines.co.uk)



## GoodOaks

Quality Care at Home



**Good Oaks' award-winning home care enables you to stay safe and independent at home.**

From 30-minute visits to 24-hour live-in care our simple, surprisingly affordable prices ensure you only pay for what you need.

Call or email us to find out more

**01905 950409**

[worcester@goodoakshomecare.co.uk](mailto:worcester@goodoakshomecare.co.uk)

**[goodoakshomecare.co.uk/  
worcester](http://goodoakshomecare.co.uk/worcester)**



## Your care matters

**with Latimer Court Care Home**

Our home is a place where people matter, where care is uncompromising, and where every individual is valued as a true one-off.

**These are the things that mean the most.**

**And because they matter to you,  
they matter to us.**

**Call to find out how we can help:**

**01905 401 841**



**LATIMER COURT**  
BARCHESTER HEALTHCARE

**[barchester.com](http://barchester.com)**

Darwin Avenue, Worcester, WR5 1SP



- Specialising in airport transfers and long distance journeys
- Full day hire, sporting events
- 1-8 seater vehicles available
- All our vehicles have free wifi and complimentary bottled water on all long distance trips

Telephone **01905 672078**

Mobile **07582 120016**

www.executivetravelworcestershire.co.uk  
email: landmexecutivetravel@gmail.com



Quality car servicing and repair  
at competitive prices

- Family run business
- Established over 40 years
- Qualified and experienced team
- Professional and personal service
- Friendly, fast and efficient
- Competitive on price
- Collect and deliver service (within the area)

Tolladine Road, Worcester WR4 9AZ  
**01905 24213**

tolladiness@btconnect.com  
www.tolladine-servicestation.co.uk



- MOT
- REPAIRS
- SERVICING
- BREAKDOWNS
- TYRES
- EXHAUSTS
- BODYSHOP
- VALETING

Tel: **01905 353666**

Fax: **01905 356518**

email: sales@airora-tansells.co.uk • web: www.airora-tansells.co.uk



TRY A LOCAL FAMILY BUSINESS FOR ALL YOUR SERVICING, REPAIRS & MOTS

**SPECIAL OFFER  
WITH THIS ADVERT**

**MOT £35**

**SERVICE AND MOT SPECIAL  
£120 inc VAT**

- **FREE TYRE CHECKS**
- **FREE BATTERY CHECKS**
- **FREE BODYWORK ESTIMATES**

**FREE DIAGNOSTIC CHECK  
WITH EVERY FULL SERVICE!!**



ALBION GARAGES, 8 DIGLIS ROAD, WORCESTER, WR5 3BP  
Just 3 minutes from Town Centre

A BLACKCIRCLES  
PREMIER GARAGE



BLACKCIRCLES.COM  
Tyres locally for less



**FREE COURTESY CAR - FREE QUOTATION - FREE  
PARKING**

**24HR-TYRELINE 07713 631193**

## From the Archdeacon of Dudley, Nikki Groarke



“We might aim for the moon and hit the fence, but at least our eyes are off the ground.”

This disarming comment is a quote from Trevor, one of our Mission Accompaniers, and it made me smile in its mix of idealism and pragmatism. The Bible is littered with exhortations to lift our eyes. The prophet Isaiah says.

*“Lift up your eyes and look to the heavens: Who created all these? He who brings out the starry host one by one and calls forth each of them by name. Because of his great power and mighty strength, not one of them is missing.” (Is 40:26)*

Psalmists write of lifting our eyes, our very souls to God:

*“I lift up my eyes to the hills - from where will my help come? My help comes from the Lord, who made heaven and earth.” (Psalm 121:1)*

*“To you, Lord, I lift up my soul.” (Psalm 25:1)*

*“To you I lift up my eyes, O you who are enthroned in the heavens!” (Psalm 123:1)*

It's all about perspective, having a godly perspective on our situation, on our church life, on the challenges and opportunities before us. Trevor talked about the moon and the fence in a short video clip introducing some of the coaches we have invited to come alongside parishes in their journey towards greater health and sustainability.

We've appointed a fabulous group of people, skilled in facilitation and mentoring, who have a passion to see churches of different shapes and sizes become all that God created them to be. They will mainly do this by encouraging us and people in our churches to lift up our eyes, life up our souls, turn our faces to the God of the universe, and seek his help, his perspective, on what might work in our context.

This is not about people telling you what to do. If you watch the video you will hear Accompaniers talk of their desire to help discern where God is already at work, by bringing a fresh pair of eyes, providing a safe space where new ideas can be explored, where we can unlock our thinking and



realise our God-given potential. They are all hope-filled encouragers, excellent skilled listeners, folk with a heart to see churches filled with people who are worshipping God, making disciples, sharing hope and transforming their communities.

When we gathered the Mission Accompaniers from across the country for a training and orientation day, I came away so excited by the possibilities, buoyed up by their energy, full of dreams about parishes across the diocese being blessed by them with a different perspective, new hope and confidence to discover their vocation and calling, unique to each church.

Can I encourage you to explore pairing up with a Mission accompanier in your church if you have not done so already. Information about how to do so is on our website. If you have, please share how it's going so that others catch the vision.

Lift up your eyes! Our God enthroned in the heavens will help and give us hope and a wider lens. His view of our churches is from the perspective of his kingdom – he longs us to join in with what he is doing as his kingdom comes on earth, as in heaven, through his people. As we focus on God, other things click into place. To you, Lord,



**Friday 22 July  
at 5.15pm**

**St Martin's Church**

**The final session of the term!  
This will be an end of term party  
with some singing -  
the best bits of our first year**

Tunes and Chips is a singing club for children of primary school age which meets once a month (except August) to enjoy the fun of singing together, followed by oven-cooked chips and fresh fruit juice.

If you - or anyone you know - would like to join, do contact the Church Office for more information: [WorcesterSouthEastTeam@gmail.com](mailto:WorcesterSouthEastTeam@gmail.com) or 01905 358083.

## **Whittington Parish Council**

Whittington Parish Council met on Tuesday 28<sup>th</sup> June at the Community Hall. Both County Councillor Linda Robinson and District Councillor Rob Adams were in attendance. The Council agreed to support a Whittington School project where children design signs seeking public co-operation relating to matters that impact on our environment, in respect of litter, dog waste and air pollution.

Matters of pedestrian safety, particularly relating to school children using the footpaths alongside the dual carriageways were raised with District and County Councillors. With the volume, speed of vehicles and the number of children making their way to and from school, it is a strong belief of the Council that the implementation and installation of safety measures were vitally important.

Information regarding the work of the Parish Council, details of the next meeting or minutes of previous meetings, can be found through the following ; Clerk to the Council David Hunter-Miller, 35 Benbow Close, Malvern Wells, WR14 4JJ,  
email [clerk@whittingtonparishcouncil.co.uk](mailto:clerk@whittingtonparishcouncil.co.uk)  
Tel 07513 122918 Website [whittingtonparishcouncil.co.uk](http://whittingtonparishcouncil.co.uk)  
[facebook.com/whittingtonpc](https://facebook.com/whittingtonpc)

### ***Worried more about money?***

Four in ten of us are now more worried about our energy bills than about catching Covid. That is the finding of a recent study by University College London (UCL).

Dr Daisy Fancourt, of UCL's Institute of Epidemiology and Healthcare and the lead author, said that as the cost-of-living crisis takes hold, "Concerns about money have been increasing, with people now more concerned about finances than about Covid-19. This suggests that new psychological stressors are becoming dominant for individuals."

The study found that there has also been a drop in happiness and life satisfaction levels, with fewer than half of adults saying they felt in control of their mental health, as compared with 54 per cent six months ago. Depression and anxiety symptoms are the highest they have been for more than a year, on a level with when the first lockdown was eased in 2020.

# Whittington Community Hall

Church Lane, Whittington, Worcester. WR5 2RQ



- The perfect venue for your group activity or unique event.
- Ideal for community, family, business, sport and leisure events and meetings.
- A thoughtfully designed modern new hall with a clean, fresh and airy feel.

For further details visit our website, including online booking facility.

[whittingtoncommunityhall.co.uk](http://whittingtoncommunityhall.co.uk)



## Community Hall Update

The contract with our main builder, Interclass plc, is now nearing its end and will conclude with a final inspection at the end of July, marking the end of their responsibility for maintenance of the structure. All of the additional works envisaged for the Hall have now been completed with the installation of the security lighting.

Various community events are being planned for the Hall, like the quiz night and Jubilee Celebrations, and will be advertised in due course.

The website **[whittingtoncommunityhall.co.uk](http://whittingtoncommunityhall.co.uk)** has full information on the facilities and booking, which can be done online.



The new Hall has been regarded by **Wychavon District Council** as a 'Flagship Project', and the Council has provided major grants from Section 106 monies to enable the scheme to go ahead and to enable the finishing works.

*Whittington Community Hall Management Committee*

[whittingtonvhc@gmail.com](mailto:whittingtonvhc@gmail.com)

## **The beginning of Islam**

Some 1400 years ago, on 16<sup>th</sup> July 622, the Islamic calendar began, when Muhammad and his followers migrated from Mecca to Medina to escape religious persecution (an event known as the Hejira) and established the first Muslim community.

The new religion spread quickly: Mohammad's men attacked trading caravans and in 630 an army of 10,000 forced Mecca itself to surrender. Though Islam, like Christianity, also looks back to Abraham, its military method of expansion was in marked contrast to the initial spread of Christianity.

Years in the Islamic (Hijri) calendar are designated either H or AH, which stands for the Latin term Anno Hegirae. It is a lunar calendar tied to the phases of the moon and based on astronomical observation, usually by an authorised person: the new month can only begin after a waxing crescent moon is observed shortly after sunset. For this reason, a month can begin on different days in different countries.

This lunar calendar should not be confused with the solar Hijri calendar used in Iran and Afghanistan. Turkish Muslims use an Islamic calendar which is calculated several years in advance by the Turkish Presidency of Religious Affairs.

The current Islamic year, 1443 AH, ends this July. Islamic years are not in sync with the Gregorian calendar because they fall about 11 days short of the solar year. The Hijri calendar cannot therefore be used for seasonal activities like agriculture, and most Muslim countries use the Gregorian calendar for non-religious purposes.

The Hijri calendar was established in 638 by Caliph Umar in Basrah, who complained because documents he received contained no date, which made it hard for him to know which were most recent. He decided the Muslim calendar should start when Muhammad arrived in Medina.

# Mendel, the peas, and the beginning of genetics

Two hundred years ago, on 20<sup>th</sup> July 1822, Gregor Mendel was born. The Austrian/Czech friar and botanist discovered the laws of heredity and created what eventually became the science of genetics.

Born to a relatively poor but devoutly Roman Catholic farming family in what was then Moravia, in the Austrian empire, Johann Mendel (he became Gregor after he joined the Order of St Augustine) became a monk partly to relieve “perpetual anxiety about means of livelihood”, but his faith was clear and frequently expressed.

He was also a meteorologist, mathematician and teacher, but his ground-breaking experiments with pea plants between 1856 and 1863 demonstrated the action of something invisible – now called ‘genes’ – in determining the inherited traits of an organism. Although he announced his results and published them in 1866, the significance of his work was not appreciated by scientists until around 1900, when his experiments were verified – another example of the consensus of scientists failing to recognise the validity of different ideas.

He was elected Abbot in 1868, and after that his life was taken up largely by administrative duties – including a long dispute about payment of religious taxes. He died in January 1884 of chronic nephritis. Czech composer Leoš Janáček played the organ at his funeral.

Mendel’s work was introduced to Britain in the early years of the 20<sup>th</sup> century by William Bateson, the first Director of the John Innes Centre in Norwich – the first research institute devoted to Mendelian genetics in Britain. He translated Mendel’s paper from German into English, championed his work and coined the word ‘genetics’.





## St Mark in the Cherry Orchard Diocese of Worcester



### News & Views from St Mark in the Cherry Orchard

**The APCM** took place after the service on Sunday, 22 May. There were nine people in attendance and, unfortunately, no-one offered to be a church warden or to join the PCC, neither of which is ideal. Congregation numbers have been low for a long time and whilst there are forty noted on the electoral roll, a large percentage either rarely attend a service or don't go to St Marks at all which is a shame because everyone receives a warm welcome if they step through the door. Heyho, life goes on and where there is life, there is hope. Everyone is aware that we live in a 24/7 world and people cram so much into what time they have. There were the usual items on the agenda and little had changed since the last APCM other than the huge rise in utility bills especially gas because of the government recommendations that community halls should be ventilated and hirers still required the heating; until the autumn, the boiler will only be supplying hot water.

#### Church Hall News

The new chair trolleys arrived on 6 June and the number of chairs left out in the hall has now been split to lessen the height. I can attest that it is now so much easier and less strenuous to deal with the stacking than it was before, something that Oddfellows and the uniform groups agree with. The PCC is most grateful to the Tuesday Rainbows, Brownies and Guides and St Peter's Parish Council for their generous contributions towards the cost of the extra stands.

#### Cherry Orchard Ladies Club - The End of an Era

After over 44 years, **Cherry Orchard Ladies Club** sadly officially closed after the AGM on 1 June, when the committee's decision was ratified. The club met in St Marks Church Hall on the first Wednesday of most months and despite members continually being asked to each introduce just one new person each, numbers have been dropping for several years.

As far as I can see from committee meeting Minutes going back to 1978, at its height, the Club had up to eighty members. *Continued....*

Compare this with just nine members who attended this year's AGM on 1 June (see photograph) and one can understand the reasoning behind the closure. The committee met on the 15 March when the future of the club was discussed at length. Membership was already dropping before Covid and had not returned to pre Covid numbers plus speakers are now costing much more than they used to, anything up to £50. It was therefore reluctantly proposed and accepted that the Club was no longer viable and it was subsequently decided to bring the matter before members at the AGM for ratification.

Over the years, the club had some wonderful and interesting speakers, enjoyed annual visits to various venues and looked forward to meals out or tasty bring your own buffets at Christmas, especially the excellent trifles provided by Avis Owen and Dilys Round. Those members that are able will come together for one last time in July for afternoon tea and the Club's thanks are extended to The Bath Road Chippy for providing excellent F&C suppers at the annual Beetle Drive.

Another church hall long term hirer, **PADS**, the dog training group, also ceased at Easter when Annette, Linda and Sue, who jointly ran the group, gave notice, insisting that the decision had not been taken lightly and had nothing to do with St Marks but was as the result of personal circumstances including a new job and illness. The large church hall, redecorated during lockdown and complimented by new chairs and trolleys to aid movement of the seats, offers excellent facilities for just £13 per hour which includes the use of everything in the hall kitchen and the use of the garden. It is particularly popular for children's parties but there is also limited availability for longer term hirers; photographs of the hall and details of hirers, together with contact details can be found on the church website, [www.stmarksworcester.wordpress.com](http://www.stmarksworcester.wordpress.com)

Volunteering is hugely important in all walks of life and can be a great way of making new friends whilst assisting a charity or any organisation to do everyday tasks.

The **Worcester Talking Newspaper** is a charity that relies entirely on donations and volunteers and has been based at the Sidbury end of Wylds Lane since 1978. This charity provides a weekly recording of local news, a periodic recorded magazine and an extensive library of talking books.

*Continued.....*

If you could spare 2 - 3 hours a week, or even monthly, to assist dealing with the dispatch of memory sticks, to their clientele, and some easy admin duties, this would be such a help as these links are such an important part of the lives of visually impaired people of all ages, please get in touch with Elizabeth, at [ehill73@gmail.com](mailto:ehill73@gmail.com)

In the 1980s, Eileen Wheelwright's son-in-law, Duncan, invited the Brownies to have their voices recorded reading local newspaper articles and, thereafter, Kate and fellow Brownie, Laura Dillingham, featured on the front page; happy days!

## **A List of Dates for your Diary:**

**6 July 2 – 3.30ish, in the Church Hall** Join us for the **Chat & Cuppa Club** (or knit & natter, it is what you make it), refreshments are free. **Absolutely everyone is welcome.**

**3 – 17 July** matinee and evening performances in **The Commandery** of Alan Ayckbourn's '**Round and Round the Garden**'. Further details on the Worcester Theatres web site and tickets are available from the Box Office in Crowngate. **Please note** that you will have to take your own chairs and/or ground blankets because the Pitchcroft flooding damaged the white garden chairs that are normally available.

**Sunday, 17 July, 3pm Friends of the Swan Theatre Fundraising 'Afternoon Tea'**. Treat yourself and/or others to this sedate event in the bar area of the Swan Theatre which overlooks the race course, complete with tasty sandwiches and homemade cakes and making use of the proper china that has been collected over many months; endless tea or coffee will be served in individual pots and the occasion will be accompanied by music. Provided that you let the Box Office staff know, dietary requirements can be accommodated. It is excellent value at £12 per ticket available from the Worcester Theatre Box Office in Crowngate.

Lastly, I hope that you all enjoyed the Jubilee Bank Holiday Weekend. On a personal note, my husband and I celebrated our Golden Wedding Anniversary quietly on Jubilee Day and received some lovely cards including many from the Wednesday congregation. Although I retired 13 years' ago, I still seem to have little time for myself because I like to keep busy and am involved with several groups but there are times when I don't feel that I am appreciated.

*Continued.....*



However, I was thrilled to be nominated by Sarah-Jane Morgan, CEO of Worcester Theatres, for the community work I did and still do, in the Swan Theatre during the lockdowns and was subsequently delighted to be selected and invited to attend The Mayor's Jubilee Lunch on 5 June (see photo). It was a real treat for both my husband and me and very enjoyable, especially as we were seated at Mayor Adrian Gregson's table.



Everyone who attended the event received a lovely and tasteful memento of the occasion in the form of a medal featuring Her Majesty Queen Elizabeth II. It is an occasion that we will both remember for a very long time and, I imagine, so will the other guests; good company, excellent food and a wonderful atmosphere.

Best Wishes

**Jan Vale**



It was bad enough your mobile ringing halfway through his sermon, without the ring-tone being the 'Christians Awake' tune!

## Seagull

A woman went to the beach with her children. Her four year-old son ran up to her, grabbed her hand, and led her to the shore where a dead seagull lay in the sand. "Mummy, what happened to him?" the little boy asked.

Not wanting to upset him, she said: "He died and went to heaven."

The child thought for a moment and said, "And God threw him back down?"

## Reaching the deepest place on earth

One hundred years ago, on 28<sup>th</sup> July 1922, Jacques Piccard, the Swiss oceanographer and engineer, was born in Belgium. He is best known for developing deep-sea submarines, and for becoming one of the first two people to reach the Mariana Trench, the deepest point on earth.

He came from a family known for daring achievements. His father Auguste set height records in ballooning, reaching the stratosphere, and later with his son adapted the technology involved in that achievement to create the bathyscaphe for deep sea exploration. As a result, the Piccard family made both the highest flight and the deepest dive.

Jacques Piccard taught economics at the University of Geneva before leaving to concentrate on deep sea research. His revolutionary vessel, developed with his father, was bought by the US Navy for salvage and rescue.

On 23<sup>rd</sup> January, 1960, Piccard and Lt Don Walsh, a submarine officer, descended to 35,800 feet in a chasm of the Marianas Trench known as Challenger Deep. There were no on-board experiments or scientific equipment. They finally touched down in "snuff-coloured ooze" where they found, amazingly, a flat fish and a new type of shrimp.

The Piccards followed this success by developing further vessels, including tourist submarines and another exploratory vessel that followed the Gulf Stream and studied its various features. Jacques Piccard, who died in 2008, also formed the Foundation for the Study and Preservation of Seas and Lakes. His son Bertrand, with Brian Jones, made the first non-stop circumnavigation of the world by balloon in 1999 (Switzerland-Egypt, 20 days).

**Advert in local paper:** 2016 Nissan Micra for sale.  
Reverend owner from new, never missed a service.



## **St Philip & St James, Whittington**

### **Sunday Worship Arrangements**

Welcome to our Sunday services. Please note the following arrangements for your own safety and that of others. Anyone showing symptoms of coronavirus should not attend church, and those who have been shielding or are clinically vulnerable should take particular care to minimise contact with others.

When entering the church by the main (side) door please sanitise your hands. The West (back) door is the emergency exit and disabled access.

Seating in alternate rows of pews or on chairs is at a social distance. Please sit where directed.

Children are welcome to attend, supervised by parents or guardians. It is requested that the congregation continue to wear a face covering inside the church building unless medically exempt. This may be removed to receive communion.

Communion (an intincted wafer) will be received standing from a central point. Please come forward in a single line and keep socially distanced. Those receiving a blessing instead should carry something as a sign to the vicar. Please speak to a Warden before the service to request a gluten free wafer or to have communion brought to your seat.

At the end of the service please remain in your seat until after the organ voluntary.

As you leave the church an offertory plate for cash or planned giving envelopes will be at the back. Please gift aid any donations if possible.

Please put orders of service in the containers provided as you leave, and return hymn books to the adjacent pile.

After the service is the opportunity to greet others in a socially distanced manner outside. It is not possible to serve refreshments at present.

The new toilet will be open.

# **Whittington Parish Magazine**

## **July & August 22 Edition**

