

ST. PHILIP & ST. JAMES PARISH CHURCH WHITTINGTON PARISH NEWS



APRIL 25

WWW.WHITTINGTONCHURCH.CO.UK

50p

St Philip and St James' Parish Church, Whittington



A Ninth Century Chapel rebuilt in 1844

In the Worcester South East Team

St Philip & St James Whittington and St Mark in the Cherry Orchard

Vicar

The Rev'd Andy Stand 01905 358150

Church Officers for Whittington

Churchwardens: Miss Janet Pearson 01905 357485

Miss Jayne Rayer 01905 351344

Asst. Warden: Mrs Brenda Giles 01905 25709

Organist:

Hon Secretary: Mrs Liz McKinnon 07803 600807

Email: lizziemck@rocketmail.com

Hon Treasurer: Mrs Brenda Giles 01905 25709

Safeguarding Officer: David Chestney 01905 359708

Elizabethan Room bookings coordinator:

Mrs Caroline Mayfield 01905 764822

Email: caroline.mayfield40@gmail.com

Magazine Editor: David Chestney 01905 359708

Email: david.battenhall@outlook.com

St. Martin with St. Peter

Team Rector: Rev'd Peter Hart 01905 355119

Assistant Curate: Rev'd Richard Wood

Assistant Curate: Rev'd Mike Bunclark

Holy Trinity & St Matthew Ronkswood

Vicar

Rev'd Rob Farmer

Team Administrator:

Rebecca Caskie: Team Office, St Martins Church,
London Road, Worcester WR5 2ED

Tel: 01905 358083

email: worcestersoutheastteam@gmail.com

*For enquiries about Baptisms, Thanksgivings, Marriages and Blessings,
please contact the Team Administrator as above.*

***The Team Office at St Martin's is open on Mon, Tues, Thurs & Friday,
10am - 1 pm, visits ideally should continue to be by appointment.***

Rebecca can always be reached by phone and email.

In This Issue

Front Cover	1
Team Details	2
Index	3
From the Team Vicar, the Revd Andy Stand	4/5
On-line Video Services and the Elizabethan Room	6
What's on at Whittington for April & May 25	7
Lent in the South-East Team, Parish Flowers & Parish Register	8
Whittington Electoral Roll & Parish Giving Scheme	9
Good Friday Project and Yew Brew on 5th April	10
Whittington Wit and Wisdom	11
Whittington CE Primary School	12
From the Archdeacon of Dudley, Nicky Groarke	13
Escape from Mariupol - 3, by Denys Bielov	14/15
Adverts	16/22
Easter Craft Event St Martin's	23
Whittington Community Hall - What's on	24
Whittington Parish Council & Forthcoming events at Hall	25
Concert Commemorating VE Day, Worcester Cathedral	26
Malvern Community Partnership	27
The Real Easter	28
Remembering Albert Einstein	29
News and Views from St Mark's	30/31/32/33
St Mark's Quiz Night 7th April	34
Remembering Madame Tussaud	35
Back Cover - Ewe Lambs	36

The invasion of Ukraine

The third instalment of Denys Bielov's account of his escape from Mariupol will be found on pages 14/15, this month. With Ukraine so much in the news recently this shows more starkly what took place when Russia invaded the country in 2022. *Ed.*

Letter from the Vicarage

April 25

Hi Everyone,

I hope you are all keeping well.

I wonder do you have a favourite Easter hymn?

Maybe, *When I Survey the Wondrous Cross*, or *There is a Green Hill Far Away*, or *Jesus Christ is Risen Today!* or *Thine Be The Glory*. Those are just a few that spring to mind as I write this letter and of course there are quite a few more that you might choose. Most of these are what I would consider to be fairly traditional Easter and Passiontide hymns. There are of course more modern ones written by some of the more contemporary hymn and worship song writers.

One of my favourites, and as it happens one I have heard twice today (21st Feb), on both the radio and television, is *My Song is Love Unknown*.

My song is love unknown
My Saviour's love for me.
Love to the loveless shown,
that they may lovely be.

For me, one of it's delights is that it reminds us, throughout, of God's love and friendship offered, given even during the events of Good Friday - the suffering of Christ's arrest, trial and execution - and of course it's invitation to us to reciprocate, to join in the worship of Jesus, whether that be at the foot of the cross, or on a sunny resurrection morn.

Here might I stay and sing
No story, so divine
Never was love dear friend,
Never was grief like thine.
This is my friend,
In whose sweet praise
I all my days could gladly spend.



I trust I am not the only one to appreciate this wonderful hymn, and we do seem to sing it a lot during our services in Holy Week. Again, for me, it falls into the classification of a traditional Passiontide hymn.

I wonder though whether you have ever stopped to really reflect on those opening words: 'Love to the loveless shown that they may lovely be.'

These words are a reminder to us that Easter is fundamentally a season of change. Death is changed to new life, resurrected life. Love is given, that the loveless may be changed, transformed. That the loveless may become lovely. Sin is conquered by grace: by the freewill offering of Christ crucified, risen and glorified.

Easter is also the season of Hope. Because of Christ's victory over death, we can have hope, and faith in His promises. Hope and faith in his promises of new life, eternal life, life in relationship with Him and our heavenly Father.

What part I wonder will you play in the new life God offers this Easter time? Will you embrace it and nurture it, or will you try and stifle and quench it? It is a gift of grace. A gift freely offered. A gift for us to accept or not as we so choose. How will you choose?

Wishing you all a joyful and blessed Eastertide.

Every blessing,

Andy



LIVE ON-LINE VIDEO SERVICES

For all churches in the South East Team

Churches in the Team are open for public worship but we are continuing to meet for worship during the week using the zoom app downloadable from the zoom.us website. To join one of the services please email the host who will send you a link:

Morning Prayer: Monday to Friday at 8.30 a.m. *hosted by Mike Bunclark (mbunclark@tiscali.co.uk)*

Compline: Monday to Friday at 8.30 p.m. *hosted by Mike Bunclark*

Monday Prayer Meeting: 4.00 p.m. *hosted by Joan Hazzard (joanhazz@gmail.com)*

Virtual 'Yew Brew' Coffee Morning: Saturday at 11.00 a.m. *hosted by Andy Stand (andy.stand@sky.com)*

Prayers for Peace and Justice: Saturday at 12 noon *hosted by Joan Hazzard*

For enquiries about Whittington please email the Vicar

andy.stand@sky.com

Sunday Services at 11.00 am will be streamed from Whittington on Zoom.



The Elizabethan Room for Meetings

The Elizabethan Room is now fully operational and is available for meetings of up to 12/15 people. Details and conditions of use are given on the church website, or at the Church, along with an application form. This can be sent to the bookings coordinator, Mrs Caroline Mayfield, email below:

caroline.mayfield40@gmail.com
or telephone 01905 764822

Sponsored by the National Lottery Community Fund

There is a defibrillator on the wall of the Elizabethan Room (shown above) and another on the front face of the Community Hall, by the main door

What's on at Whittington April & May 2025

Saturday 5th April

10.30 – 12noon Yew Brew at Crookbarrow View
1.00pm Baptism

Sunday 6th April Lent 5

11.00am Parish Communion
1.00pm Baptism
3.30pm Forest Church

Sunday 13th April Palm Sunday

11.00am Family Service

Thursday 17th April **Maundy Thursday**

7.30pm Team Holy Communion at St Martin's

Friday 18th April **Good Friday**

2.00pm 'An Hour at the Cross'

Saturday 19th April

10.30-12noon Yew Brew in the Elizabethan Room

Sunday 20th April **Easter Day**

11.00am Easter Holy Communion

Sunday 27th April **Easter 2**

**10.00am Team Service at St. Matthew's to say thank you and
goodbye to Revd Rob Farmer**

Saturday 3rd May

10.30-12noon Yew Brew in the Elizabethan Room

Sunday 4th May **Easter 3**

11.00am Holy Communion

Sunday 11th May **Whittington Sunday**

11.00am Family Service

**The Season of Lent
in the Worcester South East Team**



Ash Wednesday 5 March
Eucharist with imposition of ashes

- 10.00am at St Mark's (BCP)
10.30am at Ronswood, Meadow Court,
2nd floor lounge
7.30pm at St Martin's

Through the Week:

Stations of the Cross & Compline *
Tuesdays from 11 March, 7.00pm at St Martin's Church

Prayer Walks around St Martin's Parish
Mondays from 10 March, 11am from Church
Tuesdays from 11 March, 2pm from Church
See separate handout for routes and prayer guidance

Lent Group led by Revd Andy Stand
Tuesdays from 11 March, 2.30pm
The Vicarage, 11 Jasmine Close, St Peter's, WR5 3LU

Lent Bible Study & Prayer Group led by Peter Hart
Wednesdays from 12 March, 11.15am
Lower Yestry, St Martin's Church

* *Stations of the Cross & Compline also on Zoom at 8.30pm,
contact Mike Bunclark for joining details mbunclark@tiscali.co.uk*



Easter Flowers

Donations for Easter Flowers in memory of loved ones will be gratefully received. Forms are available in church to enable names to be recorded and remembered during the Easter season.



From the Parish Register at Whittington

Burial of Ashes
29th March 2025
Edith Rogers

Whittington Church Electoral Roll 2025

The Church Electoral Roll will be completely revised ahead of the Annual Meeting on **Sunday 11 May**. This happens every six years. Everyone wishing to be on the Roll must complete a new form, even if you have already been on the previous one. Application Forms are available from Church. Please return them either to the box at the back of church, or by post, or to the Team Office at St Martin's Church, London Road by **Sunday 13 April** at the latest. Briefly, you need to be over 16 years of age (or nearly so), baptised, and living in the parish or a regular member of the congregation. Please contact me if you are not already on the Roll but would like to join.

Janet Pearson

Church Warden & Electoral Roll Officer

Why give to your church through the Parish Giving Scheme



Giving is an essential part of our faith—it enables our churches to flourish, support communities, and share the love of Christ. The Parish Giving

Scheme (PGS) is an effective way to give regularly to your church, ensuring stability and sustainability for ministry and mission.

PGS is an established service for managing one-off and regular Direct Debit giving, designed to support churches to fund their mission and ministry. It reduces the burden of work on church volunteers and provides a simple and secure service to givers. The service is freely available to all parishes, their churches and donors in the Diocese of Worcester and we have nearly two-thirds of our parishes signed up so far.

By choosing to give through PGS, you are helping your church to:

- Plan for the future – with regular, predictable giving, your church can budget effectively for ministry, mission, and maintenance.
- Reduce administration – PGS handles gift processing and reclaiming Gift Aid, freeing up church volunteers and clergy to focus on pastoral care and outreach.

And stay financially resilient – PGS ensures giving continues even when church attendance fluctuates, providing a steady income stream.

As a giver, you will benefit from a system that is secure, confidential and easy to use, while supporting your church today and for the future.

You are invited to the
Good Friday Project
on Good Friday



**at St Mark in the
Cherry Orchard
18th April 2025,
10:00 am – 12:00 noon**

**Craft, food and fun.
All Welcome**

Church of St Philip & St James, Whittington



**Saturday 5th April
10.30am – 12 noon
The Yew Brew will be held at
**Crookbarrow View
WR5 2GN****

**Call in for tea/coffee, and light refreshments
All welcome**

www.whittingtonchurch.co.uk

Whittington Wit & Wisdom

On Saturday 1st March, 5 members of Whittington Church entertained us with a selection of favourite poetry and prose accompanied by a slide show giving a brief insight into the lives of the authors who wrote them. Introduced and led by David Tibbutt, these ranged from serious items including a speech by Winston Churchill and from Shakespear's "As you like it" to the humour of Pam Ayres and AA Milne.



Janet opened proceedings giving the woes of being an alto in the choir who never get a chance to sing the tune but are left with the limitations of providing the inner harmony. She also read Moonlit Apples, a charming poem about the moonlight shining on the apples carefully stored in the attic each Autumn and William Blake's famous poem "The Tyger".

Brenda read an imagined interview with God, Rudyard Kipling's famous advice to a young lad entitled "If" and, (as might have been expected by those who know her), "The Glory of the Garden"!

Caroline read two reflective items "A day is not lost" and "The Road not taken" about the choices we make in life and took us back to the past with "The Village Blacksmith" She also gave us Pam Ayres plea "Don't put my dinner on the slate" requesting that her Fish and Chips is served on a clean plate!

Liz read "Leisure", by William Davies, "Home thoughts from abroad" by Robert Browning and "The Seven Ages of Man" by Shakespeare. This delightful and varied programme together with the slide show giving background information about the authors had been compiled by David Tibbutt, who also read part of a speech by Winston Churchill when he first became an MP and a description of Ngong Farm in Africa where David had visited in the past.

The readings came to a close with a poem written by Winnie the Pooh from A A Milne's "The World of Pooh" looking forward to the start of spring and the coming summer before we all joined in with saying Edward Lear's "The Owl and the Pussy Cat".

We all then enjoyed some excellent refreshments and conversation before going home. Our grateful thanks to all those who took part and provided the delicious cakes, teas and coffees.

Whittington CE Primary School

From the Head Teacher, Kelly Leeming



The spring term, has been busy with exciting events and projects at Whittington. It has been a privilege to continue to see the children flourishing in their learning. We are pleased to announce that new playground markings have been added to encourage active play and learning. The students are already enjoying the bright, colorful designs which include games and activities that foster physical coordination and teamwork. These markings provide a fun and safe space for our children to play during break times and after-school activities.

Our annual Mother's Day shop, ran by the fabulous PTA allowed children to select fresh flowers for their mothers and caregivers. It was wonderful to see the children's excitement and the joy the gift brought to families. A huge thank you to all the volunteers who helped organise and run the event, and to our school community for supporting this initiative.

Children have participated in a number of sporting events including football tournament, athletics and swimming. These events were a wonderful display of teamwork, sportsmanship, and determination. Congratulations to the winning team.

Reception lead a special collective worship for Mother's Day. Children loved sharing songs, and artwork to show their appreciation. Thank you to the reception team for their hard work.

Our Eco Warriors are continuing to work hard on sustainability initiatives within the school. They have been busy creating awareness about reducing waste, recycling, and protecting the environment. The children recently held a school-wide litter-picking event, and the Eco Warriors have been leading discussions on how we can all do our part to care for our planet. Their enthusiasm is inspiring, and they are making a real difference in our school community.

I had the privilege of joining the children at Young Voices concert in Birmingham. The children joined other schools to perform a range of songs. They sang with passion and enthusiasm and had a wonderful time. Thank you to everyone who supported this event.

The children all visited the church recently for a service led by Rev Andy Stand. It is always a joyous occasion to see the children coming together in the church. Thank you to everyone for your ongoing support of our school. We look forward to the rest of the term, filled with continued learning, growth, and community spirit.

From the Archdeacon of Dudley, Nikki Groarke.



With Easter coming so late this year, and so much happening in the world, winter has felt long and dark for many. But, at last, spring has sprung and there are signs of new life all around. When the bright yellow daffodils appear, and the clocks finally go forward with the prospect of long summer evenings, it is easier to be hopeful about most things!

There are many signs of hope and green shoots in our parishes to celebrate too. As we continue to focus on our diocesan priorities we are seeing progress in each key area. Those churches which have been enabled to appoint a Children and Families Worker with grants from our Healthier Churches Fund are reporting steady growth in their engagement with children and young people, towards our goal of doubling the numbers in our churches. We are also seeing good relationships being developed with many of schools as the Church and School Partnerships Awards grow in popularity.

Many New Worshipping Communities are springing up, enabling people to explore what it means to worship God in different settings. Various groups are undergoing training in how to start and lead these, and some exciting stories are emerging, as I hope you will have seen on our website. And in our renewal churches we are also seeing new life, as attendance gradually increases and community engagement grows.

All these are signs of hope, of God at work in our diocese, as are the stories of confirmations, callings to new vocations, and the faithful witness of our congregations gathering week by week in churches of different traditions and in different contexts across Worcestershire and Dudley.

I pray our hearts will be lifted as we prepare to share resurrection hope in this season, rejoicing in all God has done, and continues to do, amongst us. "Blessed be the God and Father of our Lord Jesus Christ! By his great mercy he has given us a new birth into a living hope through the resurrection of Jesus Christ from the dead." (1 Peter 1:3)



Escape from Mariupol

by Denys Bielov - 3

Warning: The following describes detail you may find disturbing.



The continuation of my eyewitness account is horrifying. These stories are personal. I was unable to write them, for security reasons, while I was in Mariupol under occupation. I didn't want the occupiers to figure out where I lived if they got their hands on this material. Now I can and want to share my stories.

During a lull in the fighting, we went outside to look for food, water and firewood. Sometimes the artillery shelling started suddenly, when people were trying to find something on the street. I saw private houses being blown to pieces by direct hits. There were neighbourhoods in which every tenth house was destroyed, while in others almost everything was destroyed. It's hard to estimate the scale of the destruction! And there were probably bodies of people lying in these ruins. Whole blocks of flats had collapsed, and you could see hanging carpets from the still-standing pieces of ceilings, TVs, cots and sofas, and other furnishings. The most maddening thing was not knowing when this hell would stop, who would die and who would survive the next 'artillery rain'. It was as if we were in an endless ocean of horror. But the biggest horror were the dead people lying in the street and a few people removing them during the shelling. Friends and relatives, risking their lives, dragged the dead to the nearest lawn or flowerbed under fire, because it was impossible to take them to the cemetery. They were buried with makeshift wooden crosses was placed with inscriptions indicating who was buried here. By mid-May 2022, the whole city was covered in crosses: there were thousands of crosses in yards, flower beds, parks, alleys, and gardens. Russian occupants have turned our beautiful and prosperous Mariupol into a cemetery in ruins.

When our neighbourhood was stormed, there were noticeably more bodies with white bands on their arms and legs, as worn by the Russian occupiers, on the street than with blue bands as worn by our Azov fighters. While the Azovs moved mainly in groups of three to five, or even less, the Russians were running in groups of twenty to thirty, and accordingly, they were being killed in masses under the fire of our defenders.

Continued....

It was a most dangerous time, when shootings took place right under our windows.

I once came across a group of occupiers around the beginning of April. My mother and I were starving, and what little we had we stretched as much as we could. We heard a rumour that someone was selling wheat groats in a house half a kilometre away from us in the



direction of the front line. I immediately went there, despite the danger. To die of hunger was not much better than from a bullet or a shell. We had to get food somehow. As I neared, I saw a group of soldiers huddled by a fence. Behind them was an infantry fighting vehicle. Because of my poor eyesight I couldn't see from far away whether they were ours or not. Of course I was afraid. I continued to walk calmly because I realised that they had already seen me. If I had tried to run away, I could have been shot. When I came closer, I saw that they were Russians. Overcoming my fear I asked them in Russian: 'I have heard here they sell porridge, do you know where?' They immediately pointed two automatic guns at me and ordered me to strip down to my waist and show everything I had in my pockets and rucksack. This is how they look for tattoos and any sign of involvement with the Azov regiment, of which they are afraid like fire. I undressed, it was about 4°C outside and the wind very cold. It was very scary ... what will happen next? When I was naked with my hands raised, they decided to let me go. 'Get dressed and go where you came from!' shouted their commander. I guess they didn't see anything suspicious about me: I had no tattoos, and I didn't look like a military man – I was skin and bones and all overgrown. I got dressed quickly and left, forgetting about my hunger. Good thing they didn't take me prisoner. I noticed they were mostly young



boys, 20-25 years old. They all had some kind of animal fear in their eyes. No wonder. After all, they realised that around every corner they could be shot or blown up by our much more experienced fighters.



Bluebird Care - as near
to perfect as possible

Care in your home, just as you like it.

You may be in a situation where you need an extra pair of hands, or you may have complex needs that require dedicated care.

Our well-trusted care service ranges from a 30-minute daily visit through to full Live-in care.

Call our friendly team today.

Bluebird Care Worcester & Wychavon

01386 764830

worcesterandwychavon@bluebirdcare.co.uk
bluebirdcare.co.uk/worcester-wychavon

Home
is where the heart is
Let's keep it there™





WILLIAM JUPE Photo restoration

“ I was completely taken aback by the quality of repair demonstrated on your website. I had no idea such things were possible. ”

Dr David Cooper

WWW.RESTORINGGLORY.CO.UK | 01905 317713 | HAMILTON RD.



 JONES &
ASSOCIATES
BESPOKE ESTATE AGENCY

Jones & Associates is a locally based, professionally qualified Estate Agency whom specialise in personalising an estate agency service around your needs. With traditional values and wide marketing coverage including, Rightmove, Zoopla, OnTheMarket, our local website, and Social Media. Contact me now to see how we can help.

Lee Kloos MNAEA | lee.kloos@jjaa.co.uk | 07496 625205



COMMUNITY TRANSPORT

WorcesterWHEELS 01905 450654

Worcester Wheels is a registered charity providing a selection of services for people living in the city and surrounding villages. **We aim to provide a friendly, affordable, door to door service** to customer who may find it difficult to access other forms of transport. Our vehicles are fitted with tail lifts and are fully accessible to walking and wheelchair passengers.

We are here to help individuals to get to their hospital, GP, Day Services, lunch clubs, shopping trips and much more. We operate our transport services Monday to Saturday.

We offer a Friendship Hub for adults who are lonely, isolated or have a disability to come together to meet new friends, engage in activities and enjoy a hot two course meal. It is open Monday to Friday 10 am until 2 pm. All our staff and volunteers are DBS checked, fully trained and keen to make a difference.

Visit our website www.worcesterwheels.org.uk or find us on Facebook. If you would like to volunteer contact us on 01905 450 654



severn vale

WINDOWS | DOORS | CONSERVATORIES

LOCAL FAMILY BUSINESS with over 30 years experience

- Quality Energy A rated Upvc Windows and Doors
- Stunning Composite Doors
- Bi Fold doors
- Patio doors
- Bespoke Upvc Conservatories
- Solid Warm Conservatory roofs
- Misted and failed glass units replaced
- Installers of Firestone Flat Rubber Roofing



Contact us for a free no obligation quote

01905 630677

www.severn-vale.co.uk

CIVICARE 
a helping hand



HOME CARE SERVICES

HOME CARE CLIENTS | LEARNING DISABILITY UNITS



P: 01905 770110 | E: INFO.CENTRAL@CIVICARE.CO.UK
FB: CIVICARE | IG: CIVICARE.CENTRAL

Computer Problems?

We FIX computers!

Sales | Service | Support

Worcesters best loved, family run IT company...



Custom build PC's

Gaming PC's

Repairs

Upgrades

Networking

Anti Virus & Security

Home User Support

Business IT & Support



worcester-computers.com

01905 759111



visit us in-store | 40 Ombersley Road | Worcester | WR3 7HA

GLM Property Maintenance

- Traditional Window Cleaning
- All aspects of Repointing
- Fascias & Gutters (Repairs & Renewal)
- Driveways & Patios (Installation & Cleaning)
- Roof & Solar Panel Cleaning
- Cowl & Pot Fitting and Repointing
- Roofing
- Fencing & Landscape Gardening
- Hedge & Tree Cutting
- House & Garden Clearances
- Rubbish Removals
- Painting & Decorating
- Grave Restorations and Cleaning

Fully insured and licensed waste carrier

No job is too big or too small!

Call for a free quote today!

07399 024702

01905 864172

GLMServices18@gmail.com



We're on Yell.com



Like us on Facebook!

@GLMServices18

Are Your Locks Behaving Badly ?

All Types of Door & Window Locks Opened • Serviced • Repaired
UPVC Door & Window Multi-Point Lock Repair Specialist
Door Adjustment & Realignment Service

Family Business For 30 Years With Traditional Skills & Workmanship
No Call-Out Charge • Free Onsite Estimates • No VAT On Labour

...THE LOCKSMITH...

01905 570 999 www.locksmithworcestershire.co.uk 07871 44 20 11

Call Stewart Your Local Reliable Independent Locksmith Service

Andy Lee Electrician

Registered
NAPIT
Part
P

Testing
Inspection
Fault Finding

Servicing
Installations
Replacements

Telephone for Quotes:

01905 356945 or 07879 427571

Curtains by Kirsty

Made to measure curtains,
Roman blinds & soft furnishings

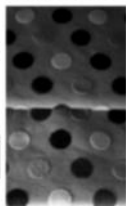
- Handmade finish
- Friendly, professional service
- Attention to detail
- No obligation quote

Contact me today

07872 441702



kirsty.kessell@hotmail.co.uk



D • A • R

(MALVERN)

DOMESTIC APPLIANCE REPAIRS

103 Worcester Road
Link Top, Malvern, Worcs
WR14 1EP

Tel: 01684 572151

We sell and repair
all makes of

Washing machines

Dishwashers

Refrigeration

Built in ovens

Cookers

Microwaves

Tumble Dryers



- Specialising in airport transfers and long distance journeys
- Full day hire, sporting events
- 1-8 seater vehicles available
- All our vehicles have free wifi and complimentary bottled water on all long distance trips

Telephone 01905 672078

Mobile 07582 120016

www.executivetravelworcestershire.co.uk
email: landmexecutivetravel@gmail.com

LOCKSMITH & DOUBLE GLAZING REPAIRS

🔑 Replacement Glass Units 🔑 Hinges 🔑 Lock Cylinders

🔑 Multi-Point Locks 🔑 Handles 🔑 Garage Door Repairs

No Call Out Fees Free Quotes Over 20 years' experience - no job too big or small



AS Locks & Services.

www.aslocksandservices.co.uk

07956 371673

01905 726671



Quality car servicing and repair
at competitive prices

- Family run business
- Established over 40 years
- Qualified and experienced team
- Professional and personal service
- Friendly, fast and efficient
- Competitive on price
- Collect and deliver service (within the area)

Tolladine Road, Worcester WR4 9AZ
01905 24213

tolladiness@btconnect.com
www.tolladine-servicestation.co.uk

Worcester Four Seasons Apartments

Battenhall Avenue, Worcester,
WR5 2HW

- Stylish, spacious & comfortable holiday accommodation
- Peaceful, south facing location
- Underfloor heating

Find us on **Airbnb** or book directly.

Contact us today:

Email: haywardpowis2@hotmail.co.uk

Mobile: 07843 944567

www.powishayward.co.uk

WOULD YOU LIKE TO ADVERTISE IN THIS SPACE

For full details, please contact the Advertising Manager
on adale.stmartins@gmail.com

WorcesterSouthEastTeam@gmail.com



JDS Electrical

For all your electrical needs
Fully qualified and insured

JON HALL

07528 183057

jds.electrical@outlook.com



JIM'LL FIX IT Handyman Service

Painting & Decorating, Tiling, Laminate Flooring
Door Hanging, Furniture Assembly, Shed Felling
Gutter Soffits & Fascias - Clean/Replace/Repair
Garden Clearance, Hedge & Tree Cutting, Mowing
Fencing, Fence Painting, Pressure Washing

*I promise a fast, friendly,
reliable service, 7 days a week*

Fully Insured - References available

01905 424945 / 07912 879214



Shelton & Lines

ESTATE AGENTS

37 DROITWICH ROAD
WORCESTER
WR3 7LG

"We're a family run estate agency focused on serving our
local community and are proud to be a part of yours!"



Offering FREE! no obligation property valuations

Please call or
book online

01905 616 330

www.sheltonandlines.co.uk



LATIMER COURT
BARCHESTER HEALTHCARE

Care as unique as you are



Providing bespoke residential, nursing, dementia
and respite care in Worcester.

Call: 01905 402 832

Latimer Court Care Home
Darwin Avenue, Worcester, WR5 1SP • barchester.com

Bedwardine Funeral Services



A Caring and Sensitive Service • Available 24 Hours a Day
Private Chapel of Rest • Pre-paid Funeral Plans Available

The Coach House, 30 Bromyard Road, St John's, Worcester WR2 5BT

01905 748811

www.bedwardinefuneralservices.co.uk

E. J. GUMERY & SON Funeral Directors

- ◆ Independent, Family Funeral Directors
- ◆ Established **1870**
- ◆ Private Chapels
- ◆ Floral Tributes
- ◆ Pre-Payment Plans
- ◆ Helpful & Efficient Personal Service



Tel: 01905 22094
24 HOURS

68, 70 & 72 Ombersley Road
Worcester WR3 7EU

www.ejgumery.co.uk
Email: info@ejgumery.co.uk



Worcester Funeral Service 01905 23499

Independent Family Funeral Directors

Craig is available 24 hours a day
Please call for any assistance



Unit 6, Kilbury Drive
Worcester, WR5 2NE

Golden Charter
Funeral Plans 

WorcesterFuneralService.co.uk

EASTER CRAFT EVENT

at St Martin's Church

for children

(accompanied by a parent or carer)

Saturday 19 April 2-4 pm

Come and join us to make
Easter decorations
for church and home!

Entry by donation

Refreshments provided



Community Hall Update

WHAT'S ON - REGULAR CLASSES YOU CAN JOIN

Please contact the class organiser for more information, costs and to pre-book

MONDAY.

10.30am - 11.30am. Zumba with Aimee Ford.

Contact: aimeeford@yahoo.co.uk

5.30pm. The Star Project Children's Theatre (Term time only) with Jo Payne.

Contact: director@thestarproject.info

TUESDAY.

4.00pm to 6.30pm. Dance (for 3 year olds and above) with Elizabeth Gibbs

Contact: lizdance@icloud.com

6.30pm - 9.30pm Gong Bath + Sound Meditation with Angela Latham.

Contact: evenstartbabe@msm.com

(varying monthly dates available)

WEDNESDAY.

4.30pm to 5.30pm Yoga with Natalie Houlding.

Contact: natalie@zafyoga.com

6.30pm to 7.30pm. Pilates with Rebecca Hadlington.

Contact: fitness-worcester.com

THURSDAY.

10.00am (for 10.15am start) to 11.00am Zumba with Denise Wrafter

11.00am to 12.00noon Yoga with Denise Wrafter.

Contact: sdwrafter@btinternet.com

7.15pm - 9.15pm T'ai Chi with Dr Marc.

Contact: marc@obelison.com

FRIDAY.

9.45am to 10.45am Zumba with Aimee Ford.

Contact: aimeeford@yahoo.co.uk

12.00noon - 1.00pm Nia Barefoot Movement with Sarah Handley.

Contact: **Sarah on 07935 150853**

6.00pm to 7.00pm. Duke Yoga with Fiona

Contact: fib42@hotmail.com



Community Hall Management Committee
info@whittingtoncommunityhall.co.uk

Whittington Parish Council

The Parish Council met on the 25th of March. The Chairman welcomed Mrs. Christine Boase as a new Parish Councillor. Matters discussed included Highways concerns, incidents and reports of anti-social behaviour and the need for victims to report these incidents to with West Mercia Police at pershorerural.snt@westmercia.police.uk

The Parish Council, working with members of the Wildmore community and county council have planted a community orchard adjacent to the foot bridge over the Swinesherd Way dual carriageway. Big thanks go to Councillor Richard Boase for his lead on this project and the 30 members of the public and councillors who turned up to help with the tree planting.

The Parish council has a councillor vacancy. For further information, news and information regarding Whittington parish go to: whittingtonparish.gov.uk

The annual Parish meeting is to be held on **Tuesday 29th April**, at 7.30pm. in the Community Hall. Members of the public are encouraged to attend. Further information relating to Parish matters can be obtained by emailing the Parish Clerk at: clerk@whittingtonparish.gov.uk and [Facebook.com/whittingtonpc](https://www.facebook.com/whittingtonpc).

Forthcoming events at the Community Hall

**Thursday 8th May Celebration of
80th Anniversary of VE Day 1.00 pm**

~~~~~

**Saturday 10th May Quiz Night 7.30 pm**

***Tickets available***



**WYCHAVON**  
DISTRICT COUNCIL  
*good services, good value*



# Malvern Community Partnership

*Founder Chairman, Ian Hopwood*



Sometimes this type of venture is called ‘twinning’ but when the partnership was first mooted by the Town Council in 2011, it was suggested that an alternative title better expressed the aims of the group.

Our aim is to cultivate a range of benefits from sharing ideas with another country to include sporting and commercial activities as well as cultural exchanges. Why did we choose [Mariánské Lázně](#) in the Czech Republic? The principal reason is that the two towns have much in common – both are spa towns but with a slightly different emphasis on how to manage tourism. Both have a strong musical heritage with a nationally recognised Conservatoire in Mariánské Lázně.

In addition, there have been strong links between the two countries going back into the 19C - Prince Albert came from Saxe-Coburg not many miles up the road from Mariánské Lázně – a link recognised today with the Royal Mariánské Lázně Golf Club. The partnership has gone well with reciprocal visits each year but there is much potential.

During the course of the week 21st June to 7th July, there will be a number of events to develop the partnership. The Mayor of Mariánské Lázně will be talking about the benefits of the partnership at the Mayor’s Reception and the Czech view on Artificial Intelligence will be discussed at two meetings – one of which will be directed at young people and our local schools.

The week also focuses on other aspects of the European diaspora with song and dance from a range of other groups.

*More information available from David Hallmark  
davidjshallmark@gmail.com*

# The Real Easter

In CS Lewis's *The Lion, the Witch and the Wardrobe*, the lion Aslan is put to death by the White Witch. The stone table on which He is killed cracks in two, but Aslan meets with Lucy and Susan alive again. He explains the Witch's failure: *'her knowledge goes back only to the dawn of time. But if she could have looked a little further back, she would have known that when a willing victim who had committed no treachery was killed in a traitor's stead, the Table would crack, and Death itself would start working backwards.'*

This is a great picture of what Jesus' cross and His resurrection has achieved. As Paul writes, *'I want to know Christ, to know the power of His resurrection'* (Philippians 3:10). To understand the real Easter, we should experience the same power that raised Jesus from the dead!

**New Hope:** Like the girls in the story, Easter highlights the sadness and confusion that loss brings. Yet the resurrection of Jesus brings new hope, as it demonstrates the victory secured by the cross over sin, Satan and death. We can face life's difficulties knowing that Jesus walks beside us.

**New Love:** Our relationships are often characterised by a lack of forgiveness, hurt and betrayal. Yet Jesus' resurrection opens the possibility of new love, as His power enables us to accept others and forgive them.

**New Life:** When we are trying to make sense of life, like the girls in the story, Jesus offers us a living relationship with Himself. It's a friendship with God through Jesus that can begin today and continue for eternity.

When Lucy met Aslan again, she cried: *'Oh, you're real, you're real!'* We too can find the real Easter through a life changing encounter with the living Christ.



"I'm really not sure about this trend for clergy dressing down, dear."



# Remembering Albert Einstein

Seventy years ago this month, on 18<sup>th</sup> April 1955, Albert Einstein, the German-born theoretical physicist, died. Considered the most influential physicist of the 20th century, he is known especially for developing the special and general theories of relativity.

He formulated possibly the best-known theory in the world – the special theory of relativity (including the iconic equation  $E = mc^2$ ) – in 1905 while working as a technical expert, third class, at the Swiss Patent Office in Bern. He went on to become widely known and admired as a physicist of genius. He died in his local hospital in New Jersey of a haemorrhage, having become an American citizen. He was also a Swiss citizen.

Einstein's family were secular Ashkenazi Jews. He was never convinced that God intervened on a personal level, regarding such an idea as naïve. But he had a firm belief in God as creator and sustainer of the universe.

He had an ongoing and never settled debate with Niels Bohr, the Danish theoretical physicist, about the way the universe was described by quantum mechanics, holding that chance could not be behind it because “God does not play dice”.

Einstein was clear that he was not an atheist – more a “religious nonbeliever”. He was disappointed in the end by his failure to prove non-randomness and to come up with a unified field theory by including electromagnetism in his geometric theory of gravitation. He did receive the 1921 Nobel Prize in Physics for his theory of the photoelectric effect.

Not long before he died, he wrote in a letter to physicist David Bohm: “If God created the world, His primary concern was certainly not to make its understanding easy for us.”

Albert Einstein was married twice and had three children by his first wife, Mileva Marić. He also played violin – hence the subtle reference to him “playing electric violin” in Bob Dylan's *Desolation Row*.

## Twitter - X.....

A man walked into a church and approached the minister. “I need help. I think I'm addicted to Twitter-X.” The minister looked at him, and said gently, “I'm so sorry, I don't follow you.”



## St Mark in the Cherry Orchard Diocese of Worcester



### News & Views from St Mark in the Cherry Orchard

**Vandalism!!** Unfortunately, St Marks has been targeted recently by vandals who have broken off vertical stonework along the wall between the church garden and the Penny Brick Way foot/cycle path; this is believed to be the original wall from when the church was built in 1902. Someone also recently smashed large glass bottles on the tarmac which was very thoughtless because it is a popular dog walking route. If you or anyone you know witness or become aware of anything untoward happening in the area, it would be appreciated if you could report it to the police asap who are stepping up patrols as and when possible. All of the church property is covered by CCTV.

### Celebrating Joan & Derryck Higgs Platinum Wedding Anniversary

I have continued to keep in touch with Joan & Derryck since they left this area in 2021, both having played a very important part in the life and times of St Marks over many years. Derryck, ably assisted by Denis Bennett, helped to make several of the pews moveable, and made a bug barn and hedgehog house for the church garden. Joan's created some wonderful cakes to accompany refreshments on special occasions after Wednesday morning services.



Derryck and Joan met when they were working in Hereford in 1952. Derryck joined the army to do his National Service in 1954 after he had finished a 5 year apprenticeship at 21. They were married when he came back to the UK on his first leave from Germany and, after he was de-mobbed, they came to the Bath Road area to live in Barnes Way. Derryck started a career in coach building at H.A. Saunders in Castle Street before moving on to building fire engines at Carmichaels in their factory in Gregory's Mill Street.

After raising two sons, Joan returned to work in the Careers Service as an employment officer. Following retirement, they moved from Barnes Way to a bungalow on, what was then, the new St Peters estate. They supported St Mark's Church from 1985 until they moved North in January 2021.

*Continued...*

I was there when Derryck was directing their son, Craig, as he loaded the last few items out of the garage into a large van, including a lathe. Derryck was, and still is, a very skilled carpenter and spent many hours creating wonderful items out of wood. His talent is now benefitting St Peter's Church in Addingham where they now worship which is a lovely old church and the people are very friendly; it is worth a visit if you are ever travel to the area for a holiday. The River Wharfe runs nearby and walkers as well as locals call in on Sunday afternoons from April till October for afternoon teas. Clare Balding championed the river recently in her program, Tales From the Riverbank. Joan's wonderful cakes, especially her pineapple cake is as popular there as it was in Worcester. Cakes were provided for the party that followed the church service to celebrate their big wedding anniversary that was attended by over 80 people!!!

They now live in an annex to their son's home, overlooking some beautiful Yorkshire countryside and where Derryck has established a much used workshop that now benefits their new church.

**Church Hall Information** The latest art group, which was drawing, drew to a close in mid March but Jonathan is returning on 1 May for another art session; again, it will be from 10am – 12noon on a Thursday morning. If you would like to be kept informed of this and future classes, please send a message to [taylornoise62@gmail.com](mailto:taylornoise62@gmail.com) or telephone: Jonathan Taylor 07788534973

Sarah Wilson has started her Pilates class on a Monday morning from 10 – 11am. For more information, please telephone Sarah 07453 300907

You now have a choice of two community chat groups that meet in the church hall. The original **Chat & Cuppa Club** continues to meet on the first Tuesday of every month, **the next is on 1 April 2- 3.30pm**. The new group, **Cherry Ladies**, met for the first time on the second Tuesday in March. It is run by Sophie Powell and is suitable for all ages; their **next meeting is on 8 April from 12 noon until 2pm** and Sophie's details are [ladywesty91@aol.co.uk](mailto:ladywesty91@aol.co.uk) telephone: 07864514739

**The Swan Theatre** is celebrating its 60<sup>th</sup> Anniversary this year and has set the whopping target of raising £60,000 in the next 12 months to support some of the really important projects that are run in the venue and, in addition, there is the need to improve the facilities in the buildings which are now showing their age; **The Worcester Theatres Charitable Trust would really appreciate your help to enable them to fund the following:** *Continued...*

**£500** will top up the bursary pot, providing **free spaces in the youth theatre** for children whose families are in receipt of benefits, so that they can attend the very popular youth theatre on a **fully funded free place**.

- **£3000** will enable the building of meaningful relationships between the Swan Theatre and local schools across Worcester, facilitating drama based workshops, developing confidence, supporting wellbeing and bolstering the national shortage of funded drama provision.
- **£6,500** will provide **venue improvements**, refreshing staff office spaces and **rejuvenating backstage areas** that are currently poorly lit and outdated, this will offer support to the team in their work and wellbeing and welcome brilliant artists and community groups to spaces at the theatre that will be **fit for purpose**.
- **£15,000** will fund changes to the current staff kitchen and add an **additional and much needed accessible toilet** in the theatre ensuring that all patrons and participants who need this facility can access it when the current ground floor toilet is inaccessible during performances. **and £35,000** for the installation of a platform lift ensuring that patrons with limited mobility can access upstairs seating. This will also add support and expand the youth theatre and adult workshops participation classes so that **people with limited mobility** and access needs can also **benefit from creative participation**.

If you are able, please support this wonderful venue to make these important changes and make a real difference in the community. Donations can be made in the following ways: via the website [www.worcestertheatres.co.uk/support-us/donations](http://www.worcestertheatres.co.uk/support-us/donations) or a cheque (payable to Worcester Theatres Charitable Trust) can be dropped into either the Swan Theatre, The Moors, Worcester WRI 3ED or Huntingdon Hall Box Office, Crowngate, Worcester WRI 3LD. Alternatively, there are cash collection points in both venues.

In addition, **The Friends of the Swan Theatre** have been challenged to increase membership by 60 people, one for each year since FOST was formed. Membership is £10 per annum which equates to around 20p per week and subscription forms can be obtained by contacting Jan Vale. FOST isn't capable of donating big bucks anymore but does occasionally pay for smaller items that do not attract grant funding i.e. paint, flooring and latterly, a new gauze stage curtain.

**Finally**, please don't forget the **quiz in the church hall on 12 April** and there is a D Day celebration concert in St Marks on Saturday, 17 May, raising funds for the church and the British Legion, ticket price includes refreshments; please see the poster. *Continued....*



Further information about any of the foregoing can be obtain from:

**Jan**

[janvale810@gmail.com](mailto:janvale810@gmail.com) or 01905 351392

**COMMUNITY CHOIR**  
CW

**Tickets £10**  
(refreshments included)

**RAFFLE**

# A Musical Afternoon of Celebration

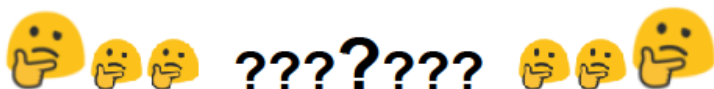
**Saturday 10th May**  
**2.30pm**  
St Martin In  
the Cornmarket  
Worcester  
WR1 2DF  
Proceeds: Maggs Day Centre  
& St Paul's Hostel

**Saturday 17th May**  
**2.30pm**  
St Marks Church  
Orchard St  
Worcester  
WR5 3DW  
Proceeds: St Marks  
Church and The Royal  
British Legion

In association with:  
**OPERA**  
WORCESTER

**Tickets available on the door & from Choir Members**

# ST MARK'S CHURCH QUIZ NIGHT



**IN AID OF DEFIBRILLATER FUND**

**SAT 12 April 2025**

**7.00 FOR 7.30 START**

**IN THE CHURCH HALL**

**Donations of £3.00pp  
appreciated**

**COME AS A TEAM OR  
JOIN ONE OF OURS**

**BYO NIBBLES & DRINKS  
(ACCOMPANIED U16s FREE)**

**CAR PARK ENTRANCE VIA ORCHARD ST  
WR5 3DW (Turn off Bath Rd opp Co-op)**



## The genius of Madame Tussaud

Some 175 years ago, on 16<sup>th</sup> April 1850, Madame Marie Tussaud, a French artist known for her wax sculptures, died. She was the founder in 1835 of Madame Tussauds wax museum in London.

Born Anna Maria Grosholtz, she was taught wax modelling in Paris by Philippe Curtius, from whom she inherited two wax museums. Imprisoned as a royalist during the French Revolution, she was given the job of making death masks from heads freshly removed from their bodies by the guillotine.

Her subsequent marriage to François Tussaud was not a success and she moved to England, where she toured for over 30 years with her collection of wax models until she found it a permanent home in Baker Street, London, where it became extremely popular: Charles Dickens described it as “more than an exhibition... an institution”. Her grandson Joseph Randall moved it to its current location on Marylebone Road in 1883.

The extensive exhibition is now operated by Merlin Entertainments and has locations in cities across four continents. The waxwork figures depict prominent people from many fields, including three Popes, Martin Luther King and Billy Graham. But it has not been without controversy: in 2004 a Nativity scene using “celebrities” – including David and Victoria Beckham as Joseph and Mary, Graham Norton as a shepherd and Kylie Minogue as an angel – was roundly criticised by the Roman Catholic Church in particular, and removed after it was damaged in an attack.

Wax figures of gods were used in funeral rites in ancient Egypt; the Greeks and Romans also used them in religious ceremonies, and dolls for children were also made of wax. In the Middle Ages, churches sometimes received votive or thanks offerings of wax figures.

### Good Friday?

I was standing in line at the bank when there was a commotion at the counter. A woman was very distressed, exclaiming, "Where will I put my money?! I have all my money and my mortgage here!! What will happen to my mortgage?! You can't do this to us!"

It turned out that she had misunderstood a small sign on the counter. It read: WE WILL BE CLOSED FOR GOOD FRIDAY.

# Whittington Parish Magazine

## April 25 Edition

